



MISSISSIPPI DIVISION OF
MEDICAID

Legislative Budget Office (LBO) Report

July 2025

Jennifer Wentworth, Deputy Administrator
550 High Street, Suite 1000
Jackson, Mississippi 39201
Phone (601) 359-3147
Email: jennifer.wentworth@medicaid.ms.gov
Website: medicaid.ms.gov

The Mississippi Division of Medicaid responsibly provides access to quality health coverage for vulnerable Mississippians.

Confidentiality Note: *This document and all attached pages are confidential and/or proprietary to the Mississippi Division of Medicaid, and may contain sensitive information, including, but not limited to, protected health information as defined by the Health Insurance Portability and Accountability Act (HIPAA) of 1996. The information contained in this document and all attached pages is intended for the exclusive use of the intended recipient and/or individual or entity named herein. The use, disclosure, copying, or distribution by any means, to anyone other than the intended recipient without the prior written permission of the Mississippi Division of Medicaid, is strictly prohibited. Any such unauthorized use, disclosure, copying, or distribution may violate federal and/or state privacy laws, including, but not limited to, HIPAA. If you have received this document, or any attached pages, in error, please notify the sender for instructions on how to destroy or return the information without additional disclosure. Thank you for your assistance in the protection of confidential information.*

MONTHLY EXPENDITURE OVERVIEW

Expenditure amounts are presented on a cash basis. Medical service and administrative expenditures reflect the date of payment rather than the date goods or services are received.

See **Appendices A-D** for more detail on expenditures.

YTD Medicaid Expenditures

FY26: \$514,374,883

FY25: \$561,204,619

-\$46,829,736

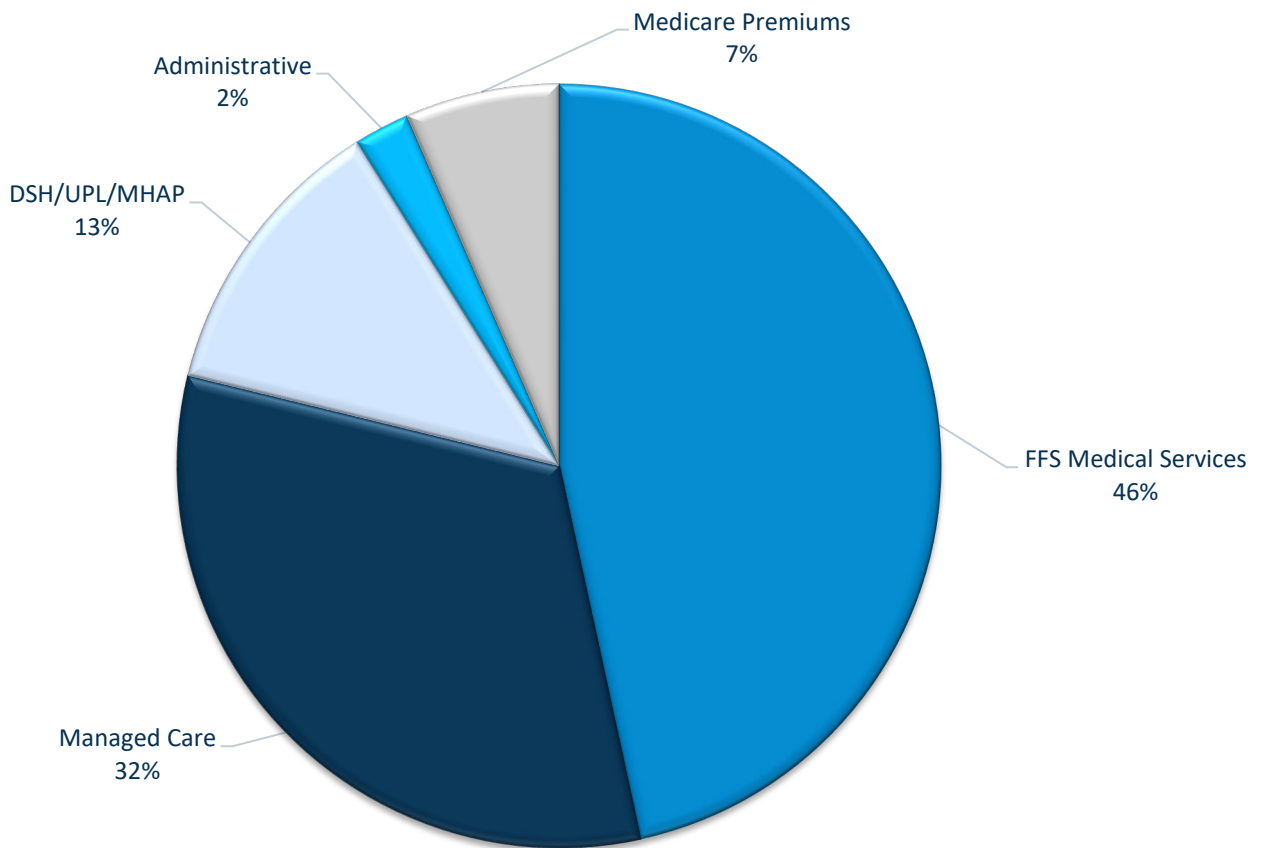
Medicaid Beneficiaries

July 2025: 649,261

July 2024: 653,916

-4,655

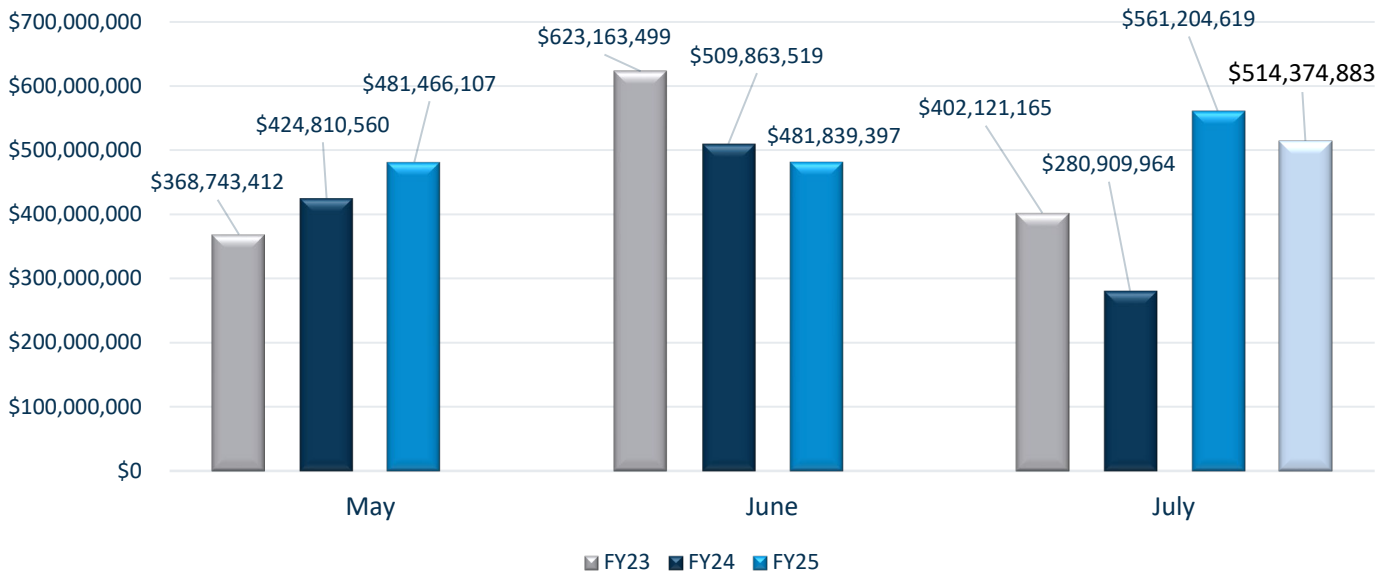
July Expenditure Summary



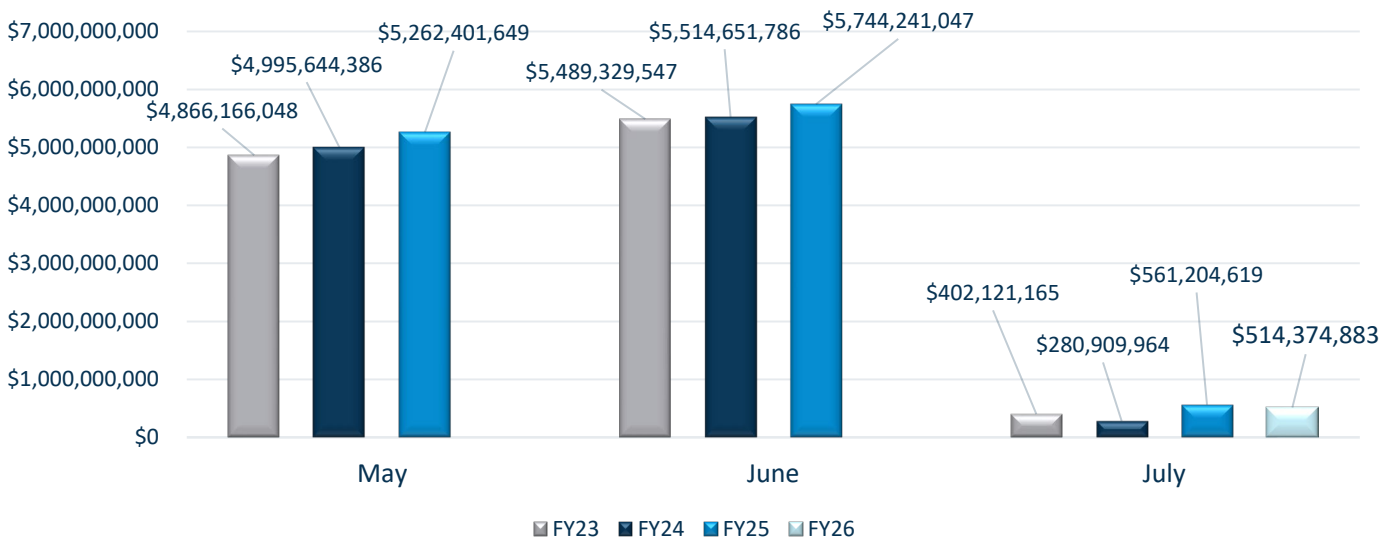
MEDICAL SERVICE EXPENDITURES

The bar graphs below compare just the medical service expenditures compared to the previous three fiscal years, and in relation to the two preceding months, by month to date (MTD) and year to date (YTD).

Medical Services Expenditures MTD



Medical Services Expenditures YTD



Weekly medical claims cycles are reported each Monday. Months that include five Mondays include an extra claims cycle which will inflate medical service expenditures for these months.

MONTHLY MEDICAID ENROLLMENT

The line graph below highlights the monthly enrollment of Medicaid beneficiaries (excluding CHIP) over the past 12-month period from August 2024 to July 2025. See **Appendix E** for more details.

Medicaid Beneficiaries

July 2025: 649,261

July 2024: 653,916

-4,655

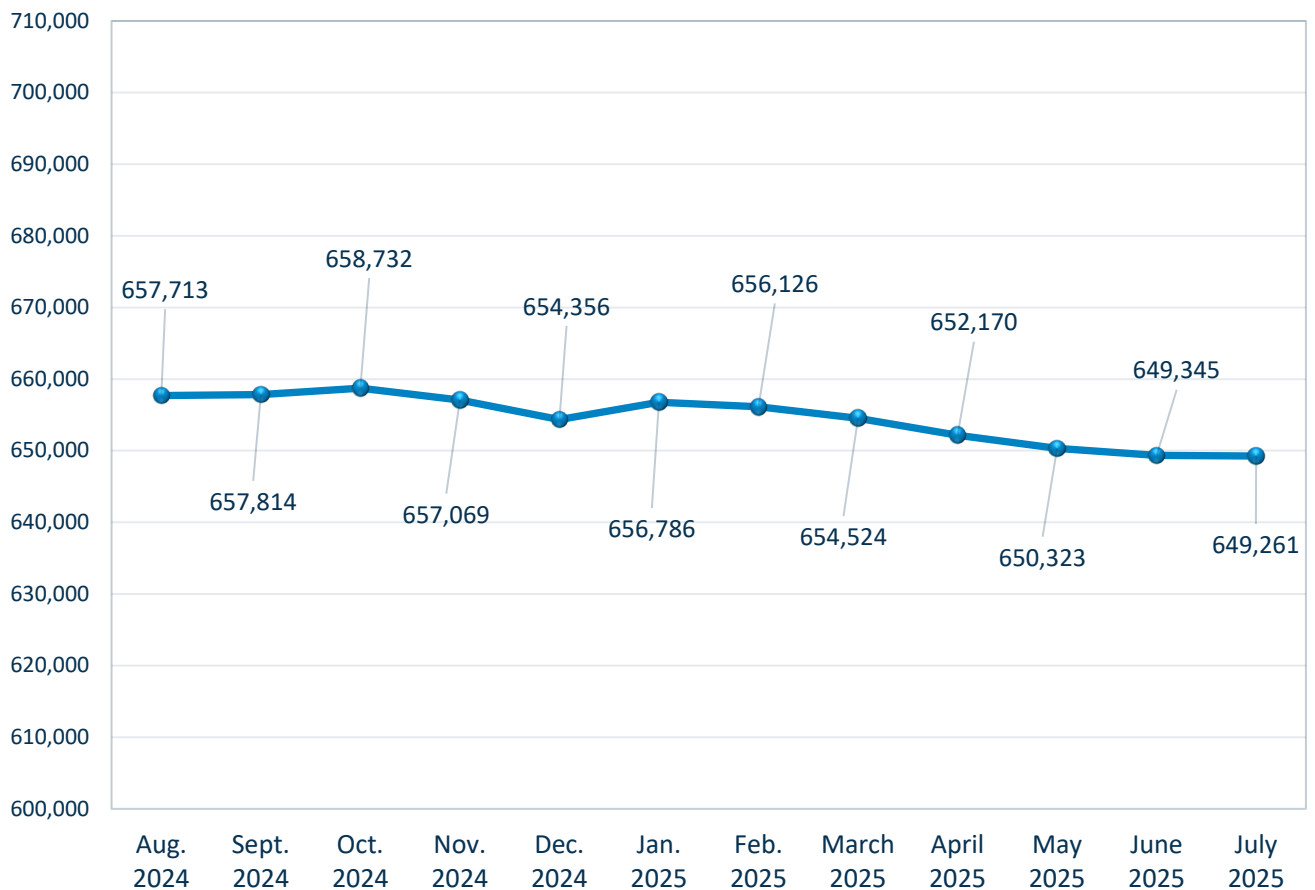
Medicaid & CHIP Beneficiaries

July 2025: 702,150

July 2024: 705,474

-3,324

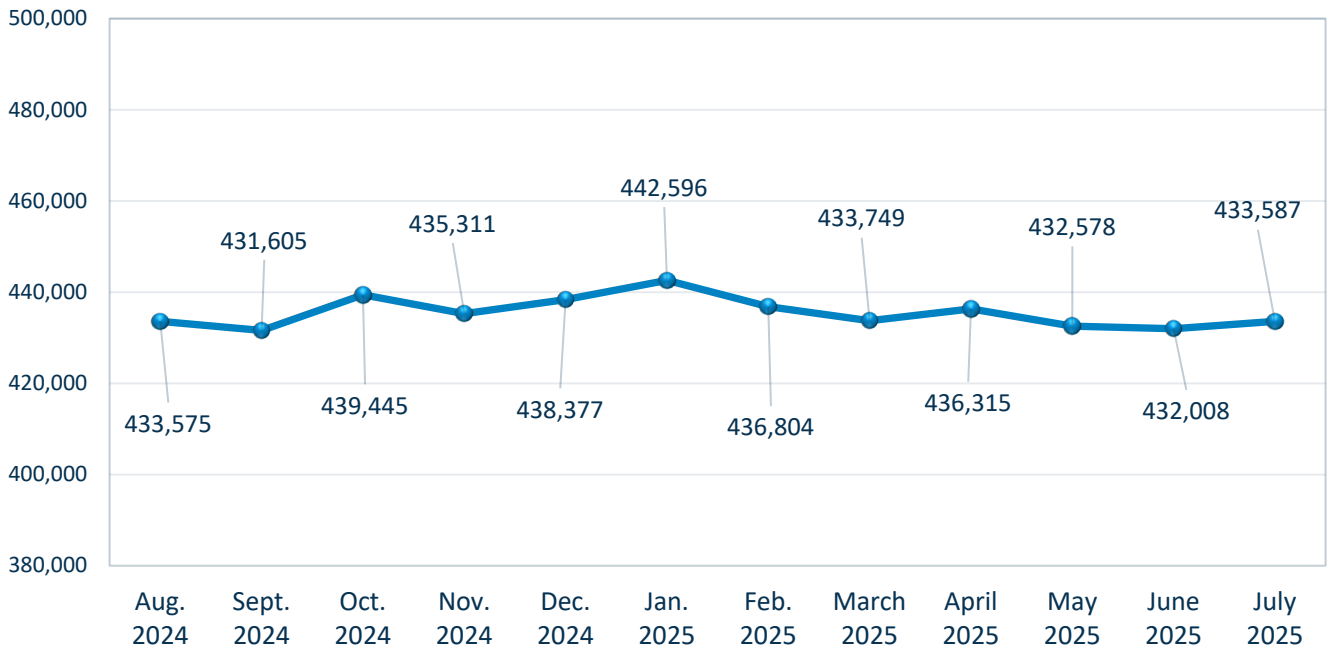
Medicaid Enrollment



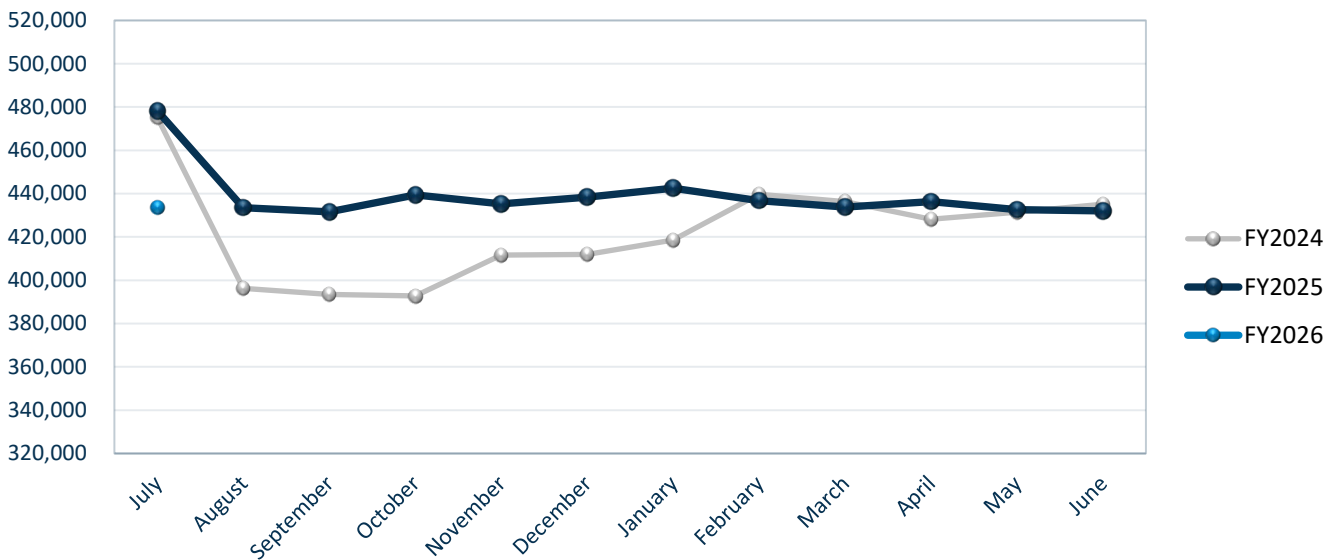
MISSISSIPPICAN OVERVIEW

The line graph below highlights the monthly enrollment of MSCAN beneficiaries over the past 12-month period. See **Appendix G** for data on capitation payments and provider expenditures.

MississippiCAN Population



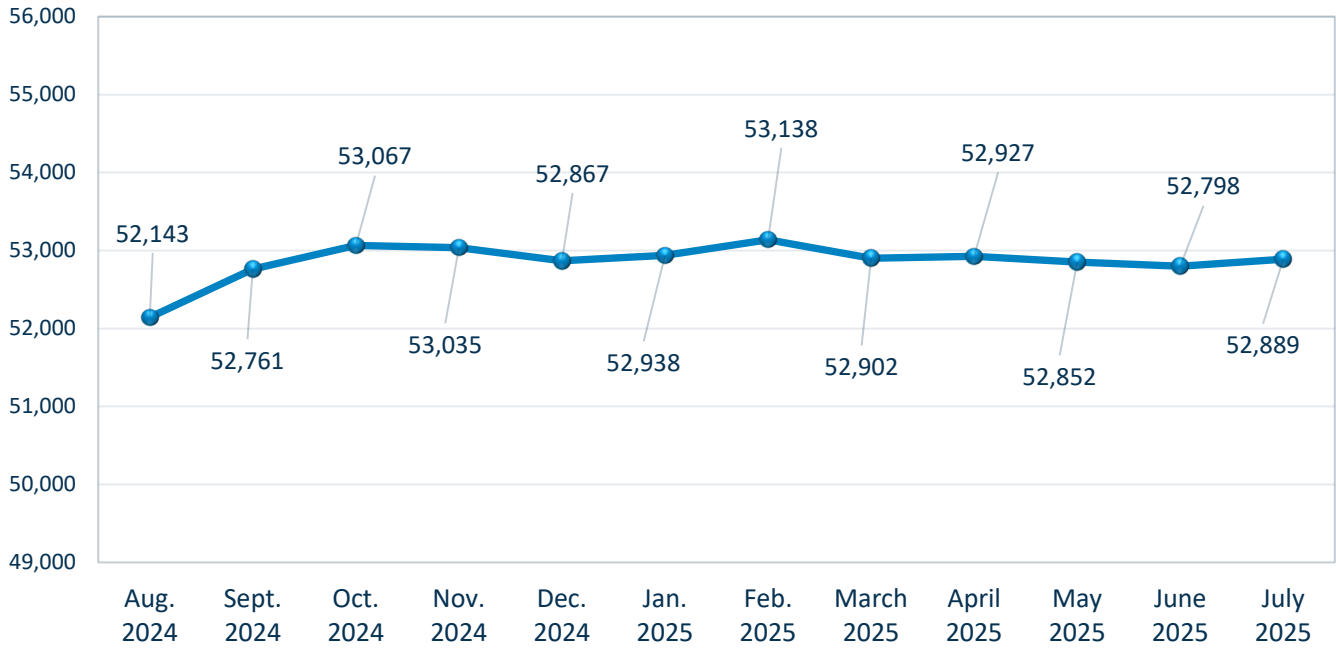
MississippiCAN Population by Fiscal Year



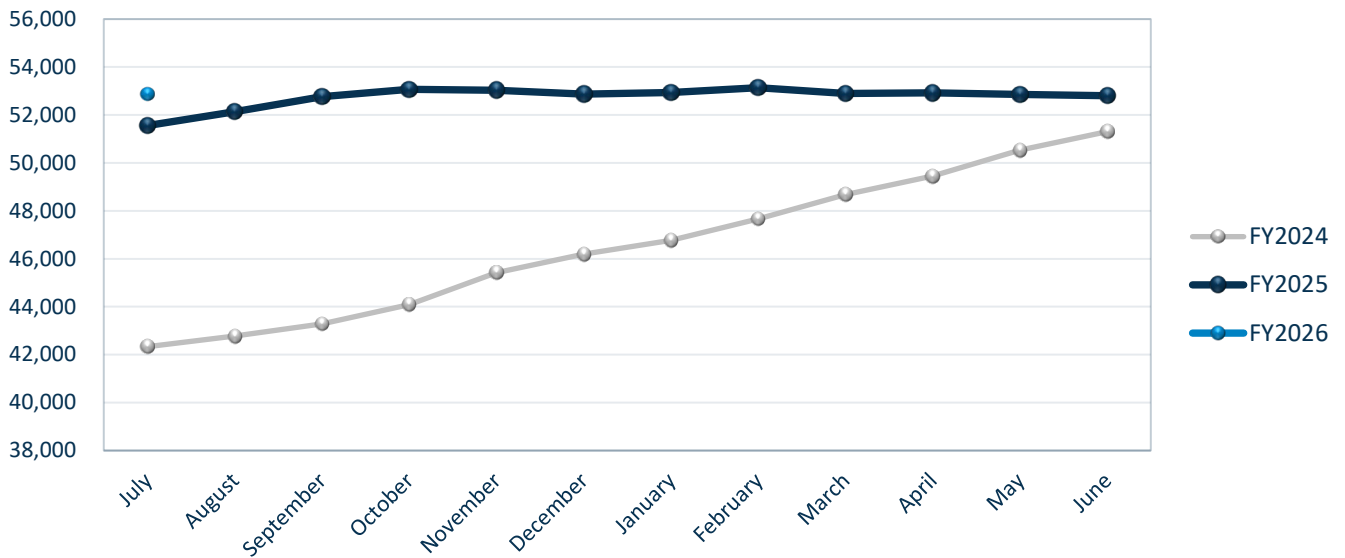
CHIP OVERVIEW

The line graph below highlights the monthly enrollment of CHIP beneficiaries over the past 12-month period. See **Appendix H** for data on capitation payments and provider expenditures.

Mississippi CHIP Population



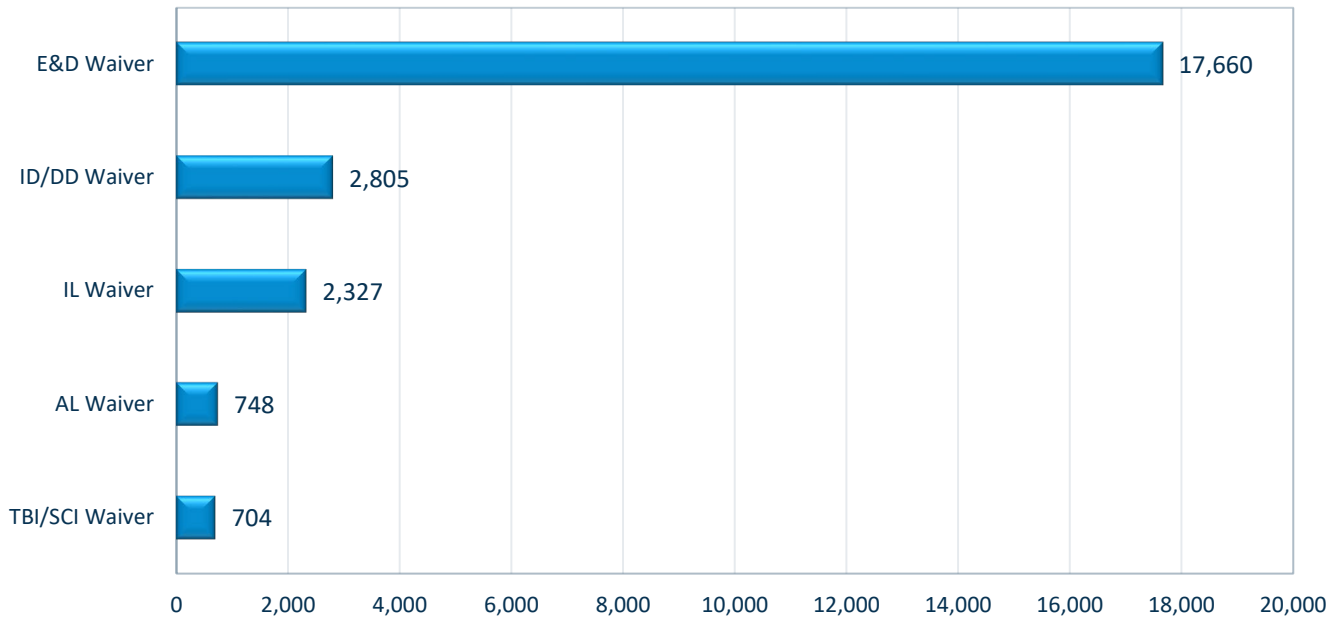
Mississippi CHIP Population by Fiscal Year



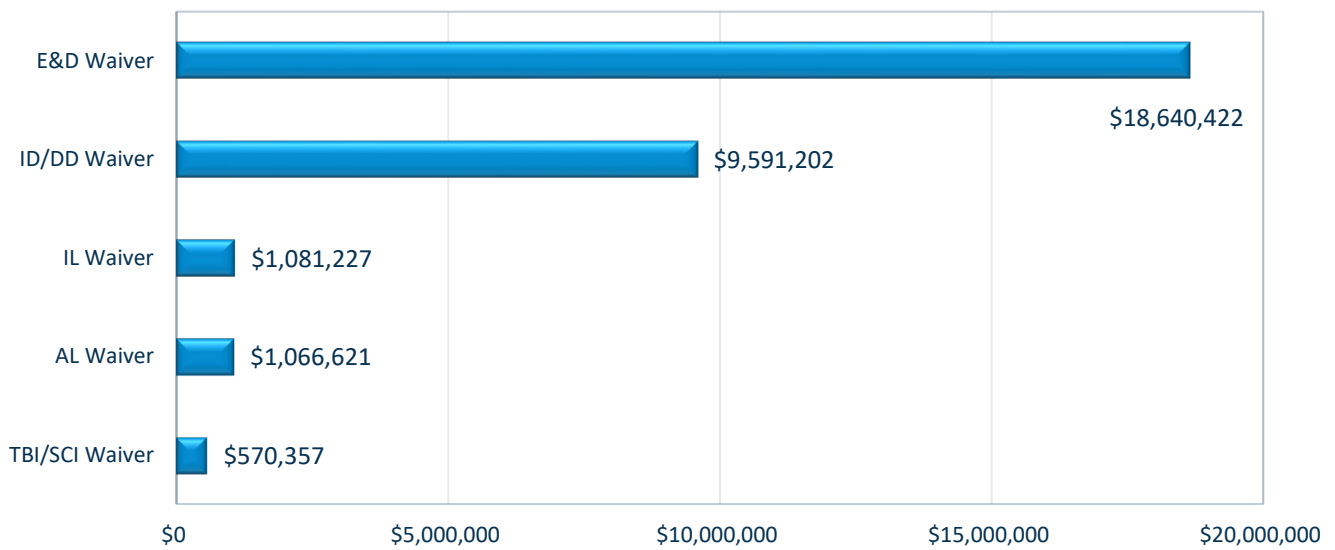
HOME AND COMMUNITY BASED SERVICES OVERVIEW

The bar graphs below show June expenditures for Home and Community Based Services (HCBS) and the number of waiver participants for the month. Because there is a one-month delay in reporting data for waivers, July figures will appear in the August report. See **Appendix I** for more details.

Home and Community Based Participants



Home and Community Based Expenditures



APPENDIX: MONTHLY EXPENDITURE DATA

- **Appendix A:** Monthly Legislative Report Notes
- **Appendix B:** Medicaid Expenditure Summary
- **Appendix C:** Monthly Medical Services Comparison
- **Appendix D:** Medical Services Comparison Fiscal Year to Date
- **Appendix E:** Participant Counts
- **Appendix F:** Other Medical Services Comparison Fiscal Year to Date
- **Appendix G:** MississippiCAN Managed Care Summary
- **Appendix H:** Mississippi CHIP Managed Care Summary
- **Appendix I:** Home and Community Based Services Expenditures
- **Appendix J:** Administrative Expenditures Detail and Cash Flow Summary
- **Appendix K:** Supplemental/Directed Payments

Office of the Governor - Division of Medicaid
Monthly Legislative Report Notes
Month Ended July 31, 2025

Appendix A

The expenditure amounts included in this report are presented on a cash basis. Medical service and administrative expenditures reflect the date of payment rather than the date of service or the date goods or services are received. The report reflects all payments made during the reporting period, and will include funds spent from both SFY-25 and SFY-26 budgets.

(Note 1) *Administrative expenditures include agency salaries, fringe, travel, commodities, and equipment. They also include contractual services, which account for approximately 68% of total administrative expenditures. The majority of these contracts are related to the administration and monitoring of the agency's medical service claims payments. Specific planning and implementation administrative expenditures are paid with 90% federal funds. Administrative expenditures related to claims processing, survey and certification activities of long term care facilities, quality improvement organizations, skilled professional medical personnel, eligibility determination personnel, and MMIS personnel are paid with 75% federal funds. The remainder of DOM administrative expenditures are paid with 50% federal funds. Also, the YTD amounts reflected were paid from either the SFY25 or SFY26 budget depending upon when goods and services were received.*

(Note 2) *The public health emergency (PHE) ended on May 11, 2023. The 2023 Consolidated Appropriation Act (CAA) provided an enhanced FMAP step down during calendar year 2023. Specifically, the FMAP increase is scheduled to decline to 5 percentage points for April-June 2023, decline to 2.5 percentage points for July-September 2023 and then fall to 1.5 percentage points for October-December 2023. The CAA also removed the continuous coverage requirement required during the PHE. Disenrollments due to eligibility redeterminations are being processed monthly. The disenrolled members have an additional 90 days to send in their eligibility paperwork and their membership may be retroactively reinstated. After that time, they must reapply for benefits. The Division completed redeterminations for all members in June 2024.*

(Note 3) *The decrease in MTD and YTD MEDICAL SERVICES expenditures is due to Pharmacy Benefit Administration (PBA) payments being included in the initial SFY2025 capitation payments.*

(Note 4) *The decrease in MTD and YTD DSH/MHAP/UPL/GME/TREAT expenditures is due to Mississippi Hospital Access Payment (MHAP) program payments of approximately \$58 million not being processed. The SFY2026 payments are pending CMS approval.*

(Note 5) *The decrease in MTD Administrative Expenditures is due to a decrease in contractual payments. Payments for system upgrades in July 2024 caused administrative expenses to be higher.*

**Office of the Governor - Division of Medicaid
Monthly Legislative Report - Medicaid Expenditure Summary
Month Ended July 31, 2025**

Appendix B

<u>Medical Service Expenditures</u>	<u>SFY-26</u> <i>Jul-25</i>	<u>SFY-25</u> <i>Jul-24</i>	<u>\$ Change</u>	<u>% Change</u>
Totals - MTD	\$514,374,883 <i>July - July 2025</i>	\$561,204,619 <i>July - July 2024</i>	(\$46,829,737)	-8.3% (Note 3)
Totals - YTD	\$514,374,883	\$561,204,619	(\$46,829,737)	-8.3% (Note 3)
<u>Other Medical Service Type Expenditures</u>	<u>SFY-26</u> <i>Jul-25</i>	<u>SFY-25</u> <i>Jul-24</i>	<u>\$ Change</u>	<u>% Change</u>
Totals - MTD	\$55,132,160 <i>July - July 2025</i>	\$56,319,986 <i>July - July 2024</i>	(\$1,187,827)	-2.1%
Totals - YTD	\$55,132,160	\$56,319,986	(\$1,187,827)	-2.1%
<u>DSH/MHAP/UPL/GME/TREAT Expenditures</u>	<u>SFY-26</u> <i>Jul-25</i>	<u>SFY-25</u> <i>Jul-24</i>	<u>\$ Change</u>	<u>% Change</u>
Totals - MTD	\$15,873,468 <i>July - July 2025</i>	\$150,674,439 <i>July - July 2024</i>	(\$134,800,971)	-89.5% (Note 4)
Totals - YTD	\$15,873,468	\$150,674,439	(\$134,800,972)	-89.5% (Note 4)
<u>Administrative Expenditures</u>	<u>SFY-26</u> <i>Jul-25</i>	<u>SFY-25</u> <i>Jul-24</i>	<u>\$ Change</u>	<u>% Change</u>
Totals - MTD	\$14,059,864 <i>July - July 2025</i>	\$20,289,911 <i>July - July 2024</i>	(\$6,230,047)	-30.7% (Note 5)
Totals - YTD	\$14,059,864	\$20,289,911	(\$6,230,047)	-30.7% (Note 1)

*See Monthly Legislative Report Notes on following page.

DSH - Disproportionate Share Hospital

MHAP - Mississippi Hospital Access Payment

UPL - Upper Payment Limit

GME - Graduate Medical Education

TREAT - Transforming Reimbursement for Emergency Ambulance Transportation

**Office of the Governor - Division of Medicaid
Monthly Medical Services Comparison
July 2025 vs July 2024**

Appendix C

Service	Jul-25	Jul-24	\$ Change	% Change
Total Expenditures	\$514,374,883	\$561,204,619	(\$46,829,737)	-8.3%
Total Managed Care	235,134,231	291,582,177	(56,447,946)	-19.4%
Total Fee for Service	\$279,240,651	\$269,622,442	\$9,618,209	3.6%
Fee for Service Totals by Service Type				
Inpatient Hospital	\$5,985,873	\$9,869,461	(\$3,883,588)	-39.3%
Outpatient Hospital	\$6,414,766	\$7,450,001	(\$1,035,235)	-13.9%
Lab and X-Ray	\$367,025	\$586,001	(\$218,975)	-37.4%
Nursing Facility	\$88,940,465	\$93,033,356	(\$4,092,891)	-4.4%
Physician	\$2,877,273	\$4,394,952	(\$1,517,679)	-34.5%
Home and Comm. Based	\$70,440,652	\$70,993,619	(\$552,967)	-0.8%
Home Health Services	\$129,082	\$156,157	(\$27,076)	-17.3%
Swing Bed Skilled	\$18,555	\$0	\$18,555	N/A
Mental Health Clinic	\$2,859,718	\$3,591,538	(\$731,820)	-20.4%
EPSDT Screening	\$532,772	\$563,206	(\$30,434)	-5.4%
Transportation	\$447,994	\$540,550	(\$92,557)	-17.1%
Non-Emergency Transport	\$0	\$0	\$0	N/A
Dental Services	\$314,175	\$401,626	(\$87,451)	-21.8%
Eyeglass Services	\$102,099	\$107,921	(\$5,823)	-5.4%
Pharmacy	\$9,665,357	\$9,348,478	\$316,878	3.4%
Dental Screening	\$281,840	\$558,821	(\$276,981)	-49.6%
Eyeglass Screening	\$66,083	\$135,385	(\$69,303)	-51.2%
Hearing Screening	\$7,628	\$10,416	(\$2,788)	-26.8%
ICF IID Facility	\$50,037,168	\$24,411,914	\$25,625,254	105.0%
Swing Bed Intermediate	\$7,292	\$9,159	(\$1,867)	-20.4%
Rural Health Clinic	\$730,790	\$1,362,701	(\$631,911)	-46.4%
Federally Qualified Hlth Ctr	\$180,065	\$264,400	(\$84,335)	-31.9%
Medical Supply (DME)	\$3,623,663	\$3,998,842	(\$375,180)	-9.4%
Therapy Services	\$684,756	\$697,139	(\$12,383)	-1.8%
Inpt. Residential Psych.	\$661,689	\$1,348,488	(\$686,799)	-50.9%
Inpt. Free Standing Psych.	\$221,312	\$217,473	\$3,840	1.8%
Nurse Services	\$3,492,442	\$3,923,064	(\$430,623)	-11.0%
Ambulatory Surg. Center	\$154,304	\$196,211	(\$41,908)	-21.4%
Personal Care Services	\$0	\$0	\$0	N/A
Hospice	\$5,885,104	\$6,393,708	(\$508,604)	-8.0%
Outpat. Free Stand. Psych	\$10,323	\$4,046	\$6,277	155.1%
Mental Health Priv. Serv.	\$246,856	\$212,640	\$34,216	16.1%
Fam. Planning Drugs	\$62,454	\$93,769	(\$31,315)	-33.4%
Free Standing Dialysis	\$216,929	\$286,969	(\$70,040)	-24.4%
Crossover Part A	\$4,449,146	\$4,907,117	(\$457,970)	-9.3%
Crossover Part B	\$17,356,513	\$17,976,702	(\$620,189)	-3.4%
NET Accommodation Prov	\$0	\$0	\$0	N/A
MYPAC	\$0	\$0	\$0	N/A
Inpatient Pediatric LTC Hosp.	\$0	\$0	\$0	N/A
Outpatient Pediatric LTC Hosp.	\$0	\$0	\$0	N/A
Crossover Part A-Pediatric LTC Hosp.	\$0	\$0	\$0	N/A
Prescribed Ped. Ext. Care Center	\$1,825,726	\$1,607,737	\$217,989	13.6%
Other	(\$57,237)	(\$31,128)	(\$26,109)	83.9%

The expenditure amounts included in this report are presented on a cash basis and reflect the date of payment rather than the date of service or the date goods or services are received. The report reflects all payments made during the reporting period, and will include funds spent from both SFY-23 and SFY-24 budgets.

**Office of the Governor - Division of Medicaid
Medical Services Comparison Fiscal Year to Date (FYTD)
FYTD 2026 vs 2025**

Appendix D

Service	FYTD 2026	FYTD 2025	\$ Change	% Change
Total Expenditures	\$514,374,883	\$561,204,619	(\$46,829,737)	-8.3%
Total Managed Care	\$235,134,231	\$291,582,177	(\$56,447,946)	-19.4%
Total Fee for Service	\$279,240,651	\$269,622,442	\$9,618,209	3.6%
Fee for Service Totals by Service Type				
Inpatient Hospital	\$5,985,873	\$9,869,461	(\$3,883,588)	-39.3%
Outpatient Hospital	\$6,414,766	\$7,450,001	(\$1,035,235)	-13.9%
Lab and X-Ray	\$367,025	\$586,001	(\$218,975)	-37.4%
Nursing Facility	\$88,940,465	\$93,033,356	(\$4,092,891)	-4.4%
Physician	\$2,877,273	\$4,394,952	(\$1,517,679)	-34.5%
Home and Comm. Based	\$70,440,652	\$70,993,619	(\$552,967)	-0.8%
Home Health Services	\$129,082	\$156,157	(\$27,076)	-17.3%
Swing Bed Skilled	\$18,555	\$0	\$18,555	N/A
Mental Health Clinic	\$2,859,718	\$3,591,538	(\$731,820)	-20.4%
EPSDT Screening	\$532,772	\$563,206	(\$30,434)	-5.4%
Transportation	\$447,994	\$540,550	(\$92,557)	-17.1%
Non-Emergency Transport	\$0	\$0	\$0	N/A
Dental Services	\$314,175	\$401,626	(\$87,451)	-21.8%
Eyeglass Services	\$102,099	\$107,921	(\$5,823)	-5.4%
Pharmacy	\$9,665,357	\$9,348,478	\$316,878	3.4%
Dental Screening	\$281,840	\$558,821	(\$276,981)	-49.6%
Eyeglass Screening	\$66,083	\$135,385	(\$69,303)	-51.2%
Hearing Screening	\$7,628	\$10,416	(\$2,788)	-26.8%
ICF IID Facility	\$50,037,168	\$24,411,914	\$25,625,254	105.0%
Swing Bed Intermediate	\$7,292	\$9,159	(\$1,867)	-20.4%
Rural Health Clinic	\$730,790	\$1,362,701	(\$631,911)	-46.4%
Federally Qualified Hlth Ctr	\$180,065	\$264,400	(\$84,335)	-31.9%
Medical Supply (DME)	\$3,623,663	\$3,998,842	(\$375,180)	-9.4%
Therapy Services	\$684,756	\$697,139	(\$12,383)	-1.8%
Inpt. Residential Psych.	\$661,689	\$1,348,488	(\$686,799)	-50.9%
Inpt. Free Standing Psych.	\$221,312	\$217,473	\$3,840	1.8%
Nurse Services	\$3,492,442	\$3,923,064	(\$430,623)	-11.0%
Ambulatory Surg. Center	\$154,304	\$196,211	(\$41,908)	-21.4%
Personal Care Services	\$0	\$0	\$0	N/A
Hospice	\$5,885,104	\$6,393,708	(\$508,604)	-8.0%
Outpat. Free Stand. Psych	\$10,323	\$4,046	\$6,277	155.1%
Mental Health Priv. Serv.	\$246,856	\$212,640	\$34,216	16.1%
Fam. Planning Drugs	\$62,454	\$93,769	(\$31,315)	-33.4%
Free Standing Dialysis	\$216,929	\$286,969	(\$70,040)	-24.4%
Crossover Part A	\$4,449,146	\$4,907,117	(\$457,970)	-9.3%
Crossover Part B	\$17,356,513	\$17,976,702	(\$620,189)	-3.4%
NET Accomodation Prov	\$0	\$0	\$0	N/A
MYPAC	\$0	\$0	\$0	N/A
Inpatient Pediatric LTC Hosp.	\$0	\$0	\$0	N/A
Outpatient Pediatric LTC Hosp.	\$0	\$0	\$0	N/A
Crossover Part A-Pediatric LTC Hosp.	\$0	\$0	\$0	N/A
Prescribed Ped. Ext. Care Center	\$1,825,726	\$1,607,737	\$217,989	13.6%
Other	(\$57,237)	(\$31,128)	(\$26,109)	83.9%

The expenditure amounts included in this report are presented on a cash basis and reflect the date of payment rather than the date of service or the date goods or services are received. The report reflects all payments made during the reporting period, and will include funds spent from both SFY-23 and SFY-24 budgets.

**Office of the Governor - Division of Medicaid
 Monthly Legislative Report - Participant Counts
 Month Ended July 31, 2025**

Appendix E

<u>MS Medicaid Beneficiaries</u>	<u>SFY-26</u>	<u>SFY-25</u>	<u>Change</u>	<u>% Change</u>
As of Last Day of the Month	<i>Jul-25</i> 649,261	<i>Jul-24</i> 653,916	(4,655)	-0.7% <i>(Note 2)</i>
Average for the Period	<i>July - July 2025</i> 649,261	<i>July - July 2024</i> 653,916	(4,655)	-0.7%
<u>CHIP Beneficiaries</u>	<u>SFY-26</u>	<u>SFY-25</u>	<u>Change</u>	<u>% Change</u>
Capitation Payment Population	<i>Jul-25</i> 52,889	<i>Jul-24</i> 51,558	1,331	2.6%
<u>Dialysis Transport</u>	<u>SFY-26</u>	<u>SFY-25</u>	<u>Change</u>	<u>% Change</u>
Participants Covered by Monthly Payment	<i>Jul-25</i> 2	<i>Jul-24</i> 0	2	#DIV/0!

* Home and Community Based Waiver Participants are included in the MS Medicaid Beneficiaries total.

OFFICE OF THE GOVERNOR - DIVISION OF MEDICAID
Other Medical Services Comparison Fiscal Year to Date (FYTD)
FYTD 2026 vs 2025

Appendix F

Service	MTD 7/1/2025	MTD 7/1/2024	FYTD 2026	FYTD 2025	\$ Change	% Change
TOTAL Expenditures	\$55,132,160	\$56,319,986	\$55,132,160	\$56,319,986	(\$1,187,828)	-2.1%
CHIP ¹	\$15,906,514	\$19,342,831	\$15,906,514	\$19,342,831	(\$3,436,317)	-17.8%
Part A & B Premiums ²	\$33,084,812	\$31,366,788	\$33,084,812	\$31,366,788	\$1,718,024	5.5%
Clawback	\$6,133,154	\$5,610,367	\$6,133,154	\$5,610,367	\$522,787	9.3%
Dialysis Transport	\$7,680	\$0	\$7,680	\$0	\$7,680	N/A
State Funded Subsidies ³	\$0	\$0	\$0	\$0	\$0	N/A

¹ The SFY26 CHIP capitation rate increased to \$237.50 per member per month from the SFY25 rate of \$227.64.

² Part A & B Premiums

Effective Date - Calendar Year	Premium Amount	
	Part A	Part B
Year 2025	\$518	\$185.00
Year 2024	\$505	\$174.70
Year 2023	\$506	\$164.90
Year 2022	\$499	\$170.10
Year 2021	\$471	\$148.50
Year 2020	\$458	\$144.60
Year 2019	\$437	\$135.50
Year 2018	\$422	\$134.00
Year 2017	\$413	\$134.00
Year 2016	\$411	\$121.80
Year 2015	\$407	\$104.90

³ No State-Funded Subsidies were appropriated in SFY2023, SFY2024 and SFY2025.

Office of the Governor - Division of Medicaid
MSCAN Managed Care Summary
Month Ended June 30, 2025*

MSCAN Population	SFY 2025	SFY 2024	Change	% Change
	Month of June	Month of June		
Magnolia	178,234	172,498	5,736	3.3%
United Healthcare	147,019	164,064	(17,045)	-10.4%
Molina	106,755	98,508	8,247	8.4%
Total	432,008	435,070	(3,062)	-0.7%
Percent of Total Medicaid Beneficiaries	66.53%	65.26%	1.27%	1.95%

Narrative/Notes:

MSCAN Capitation Payments	Per Member		
	June 2025	Year To Date SFY 25	Per Month (PMPM)
Magnolia	\$ 54,868,939	\$ 835,417,628	\$ 395.69
United Healthcare	\$ 28,037,511	\$ 716,910,304	\$ 369.46
Molina	\$ 36,426,205	\$ 420,440,529	\$ 344.94
Total	\$ 119,332,655	\$ 1,972,768,460	\$ 374.30

Narrative:
The Capitation Payments are paid to the CCOs on a monthly basis by region and rate cell to cover the following components of each beneficiaries medical care based on rates as determined by DOM's actuaries:

- Targeted Medical Loss Ratio	86.41%
- Administrative Expenses	8.79%
- State of Mississippi Premium Tax	3.00%
- Targeted CCO Margin	1.80%
Total	100.00%

The Per Member Per Month (PMPM) rate is calculated based on the Year To Date SFY 25 Total Capitation divided by the total Member Months for each CCO during that YTD period.

The above Capitation Payments do not include expenditures for the Mississippi Hospital Access Program (MHAP) which are paid out to hospital providers through the CCOs. An increase to MHAP was approved by CMS on December 12, 2023. The fixed annual amount is \$1,540,423,694.

In addition to the basic PMPM capitation payment, the capitation payment amounts above may include necessary adjustments, including: retro-rate adjustments, and liquidated damages assessed against the CCOs.

MSCAN Provider Expenditures	June 2025		Year To Date SFY 25	
CCO Fee-for-Service	\$	102,044,223	\$	1,285,651,958
Pharmacy Benefit Services	\$	(879)	\$	4,517,460
Behavioral Health Services	\$	17,858,801	\$	221,194,656
Dental Services	\$	9,703,520	\$	118,952,183
Vision Services	\$	1,320,375	\$	22,217,610
Non-Emergency Transportation Services	\$	1,006,578	\$	13,942,536
Total	\$	131,932,619	\$	1,666,476,404

Narrative:
DOM utilizes the CCO monthly Cash Disbursements Journal (CDJ) to track the different types of medical services paid by the CCO's on a cash basis. The CCO's have subcontractors that pay for Behavioral Health Services, Dental Services, and Vision Services. The remainder of their medical payments are included in the CCO Fee-for-Service amounts above. Beginning with SFY 25, the Pharmacy expenditures were transferred to the DOM PBA.

The CCOs are contractually required to pay out not less than 91.3% of capitation rates in medical expenditures. This was revised up from 87.5% due to the inclusion of MHAP and MAPS directed payments into the MLR report as required by CMS.

DOM monitors these payments to providers both monthly in the CDJ amounts shown above and in the Medical Loss Ratio (MLR) Reports that are provided by each CCO on a quarterly and annual basis.

For the most recent period ended June 30, 2024, the MSCAN MLR rates, per the CCO submitted reports, were:

Magnolia Health	95.3%
United Healthcare	94.8%
Molina Healthcare	93.9%
Total	94.9%

Note: These are Reporting MLR Rates per the MSCAN Contract which include HCQI, HIT eligible expenses. (HCQI - Health Care Quality Improvements; HIT - Health Information Technology)

*There is a one month delay in reporting data for managed care. The vendors send data after their end of month processing, usually by the 15th of the following month.

**Office of the Governor - Division of Medicaid
MSCHIP Managed Care Summary
Month Ended June 30, 2025***

Appendix H

MSCHIP Population	SFY 2025	SFY 2024	Change	% Change
	Month of June	Month of June		
United Healthcare	26,896	32,047	(5,151)	-16.1%
Molina	25,980	19,340	6,640	34.3%
Total	52,876	51,387	1,489	2.9%

Narrative/Notes:

MSCHIP Capitation Payments	June 2025	Year To Date SFY 25	Per Member	
			Per Month (PMPM)	
United Healthcare	6,160,763	88,226,074	\$	233.58
Molina	5,855,563	61,021,610	\$	234.41
Total	12,016,326	149,247,684	\$	233.92

Narrative:
The Capitation Payments are paid to the CCOs on a monthly basis at a state-wide rate to cover the following components of each beneficiaries medical care based on rates as determined by DOM's actuaries:

- Targeted Medical Loss Ratio	85.25%
- Administrative Expenses	9.95%
- State of Mississippi Premium Tax	3.00%
- Targeted CCO Margin	1.80%
Total	100.00%

The Per Member Per Month (PMPM) rate is calculated based on the Year To Date SFY 25 Total Capitation divided by the total Member Months for each CCO during that YTD period.

In addition to the basic PMPM capitation payment, the capitation payment amounts above may include necessary adjustments. These capitation payments also include the DOM PBA payments.

The only CHIP program expenses that do not flow through the CCOs are CHIP vaccine program payments made by DOM to the MS State Department of Health. These vaccine payments average \$2.7 million annually. The current CHIP rate for SFY 2025 is \$227.37. This rate was reduced from SFY 24 with the transfer of pharmacy payments to the DOM PBA.

MSCHIP Provider Expenditures	June 2025		Year To Date SFY 25	
CCO Fee-for-Service	\$	6,636,782	\$	94,055,846
Pharmacy Benefit Services	\$	-	\$	479,116
Behavioral Health Services	\$	887,765	\$	9,826,902
Dental Services	\$	1,827,566	\$	20,196,914
Vision Services	\$	169,482	\$	2,717,658
Non-Emergency Transportation Services	\$	879	\$	23,826
Total	\$	9,522,475	\$	127,300,263

Narrative:
DOM utilizes the CCO monthly Cash Disbursements Journal (CDJ) to track the different types of medical services paid by the CCO's on a cash basis. The CCO's have subcontractors that pay for Behavioral Health Services, Dental Services, and Vision Services. The remainder of their medical payments are included in the CCO Fee-for-Service amounts above. Beginning with SFY 25, the Pharmacy expenditures were transferred to the DOM PBA.

The CCOs are contractually required to pay out not less than 85% of all capitation payments received in medical payments to healthcare providers. The capitation rates include 85.25% on average for expected medical payments.

DOM monitors these payments to providers both monthly in the CDJ amounts shown above and in the Medical Loss Ratio (MLR) Reports that are provided by each CCO on a quarterly and annual basis.

For the most recent period ended June 30, 2024, the MSCHIP MLR rates, per the CCO submitted reports, were:

Molina	89.9%
United Healthcare	95.9%
Total	93.6%

Note: These are Reporting MLR Rates per the MSCHIP Contract which include HCQI, HIT eligible expenses. (HCQI - Health Care Quality Initiatives; HIT - Health Information Technology)

*There is a one month delay in reporting data for managed care. The vendors send data after their end of month processing, usually by the 15th of the following month.

**Office of the Governor - Division of Medicaid
Home and Community Based Expenditures
Month Ended June 30, 2025**

Appendix I

	Waiver Services	State Plan Services	Total ¹	Participants ^{2, 3}
Assisted Living Waiver for Elderly and Disabled Adults	\$889,054	\$177,567	\$1,066,621	748
Waiver for Elderly and Disabled Individuals	\$16,174,705	\$2,465,717	\$18,640,422	17,660
Independent Living Waiver	\$678,397	\$402,830	\$1,081,227	2,327
Waiver for Intellectual Disabilities / Developmentally Disabled	\$9,201,009	\$390,193	\$9,591,202	2,805
Waiver for Individuals with a Traumatic Brain or Spinal Cord	\$248,802	\$321,554	\$570,357	704

¹ Home and Community Based Waiver expenditures are also included in Medical Service Expenditure totals cited in this report.

² The expenditure totals above reflect claims payments made during the report month. Claims payments could be related to dates of service for periods up to 2 years prior to the claims payment date. Therefore, any comparison of expenditures and participants noted above will not provide accurate results. The number enrolled and the amount of paid claims must be viewed independent of one another.

³ Participant count does not include pending applications during the month.

*There is a one month delay in reporting data for waivers. Agencies send data after their end of month processing, usually by the 15th of the following month.

**Office of the Governor - Division of Medicaid
Administrative Expenditures Detail
Month Ended July 31, 2025**

Appendix J

		<u>MTD</u> <u>July-25</u>		<u>YTD</u> <u>July '25 - July '25</u>	
1. PERSONAL SERVICES - SALARIES	\$	4,721,752	\$	4,721,752	
2. PERSONAL SERVICES - TRAVEL	\$	74,316	\$	74,316	\$ 6,193.02
3. CONTRACTUAL SERVICES	\$	9,207,368	\$	9,207,368	
4. COMMODITIES	\$	25,959	\$	25,959	
5. CAPITAL OUTLAY - EQUIP	\$	8,560	\$	8,560	
6. CAPITAL OUTLAY - VEHICLES	\$	21,909	\$	21,909	
TOTAL ADMINISTRATIVE EXPENSE	\$	14,059,864	\$	14,059,864	

The expenditure amounts included in this report are presented on a cash basis and reflect the date of payment rather than the date of service or the date goods or services are received. The report reflects all payments made during the reporting period, and will include funds spent from both SFY-21 and SFY-22 budgets.

**CASHFLOW PROJECTION
Month Ended July 31, 2025
FY 26**

The Division of Medicaid's Cashflow Projections represent the agency's best predictor of future cash requirements based on current and estimated future expenditure trends. Expenditures for medical services are highly volatile in nature and control by our agency is limited. These expenditures are components of rates and utilization of services that are dictated by state and federal legislation, as well as economic changes. Predicting cashflow outcomes into the future is not possible with 100% accuracy, and these projections will change on a monthly basis.

Cash and Additional Sources

Funding Sources Available	\$	-	
Tobacco Funds Due to DOM	\$	-	
State Agency Matching Funds	\$	-	
Recovery of Capitation Payments due to the implementation	\$	-	
Provider Taxes	\$	-	
Total Funding Sources Available	\$	-	

Funding Uses Projected

Medical Service Claims	\$	-	
Other Medical Service Expenditures	\$	-	
Administrative Expenditures	\$	-	
Total Funding Uses Projected	\$	0	

Projected Cash Balance (Shortfall) FY-25 **\$ -**

The Cashflow Projection will be issued with the September, December and January - June reports.

OFFICE OF THE GOVERNOR - DIVISION OF MEDICAID
Supplemental/Directed Payment Detail
FYTD 2026 vs 2025

Appendix K

Service	MTD 7/1/2025	MTD 7/1/2024	FYTD 2026	FYTD 2025	\$ Change	% Change
TOTAL Expenditures	\$15,873,468	\$150,674,439	\$15,873,468	\$150,674,439	(\$134,800,972)	-89.5%
DSH*	\$4,791	(\$483,035)	\$4,791	(\$483,035)	\$487,826	-101.0%
MHAP	\$0	\$137,397,891	\$0	\$137,397,891	(\$137,397,891)	-100.0%
Nursing Home UPL	\$0	\$0	\$0	\$0	\$0	N/A
Physician UPL	\$1,705,720	\$0	\$1,705,720	\$0	\$1,705,720	N/A
Hospital UPL	\$14,162,957	\$13,759,583	\$14,162,957	\$13,759,583	\$403,374	2.9%
Ambulance (TREAT)	\$0	\$0	\$0	\$0	\$0	N/A
GME	\$0	\$0	\$0	\$0	\$0	N/A
MAPS	\$0	\$0	\$0	\$0	\$0	N/A

* This can be negative due to DSH recoupments for prior years. In accordance with the State Plan, the recouped funds will be paid to other hospitals which had remaining uncompensated care balances.