

State Mississippi

ORGANIZATION AND FUNCTION OF MEDICAL ASSISTANCE UNIT

---

---

In accordance with Paragraph 431.10(e), the Division of Medicaid, Office of the Governor, is delegated the authority to perform all functions specified in Federal Regulations for the Single State Agency.

An organizational chart is attached which reflects the Division of Medicaid, Office of the Governor, to be an integral part of the Office of the Governor, and, therefore, will carry out the administration of the Medicaid Program under Title XIX for the State of Mississippi.

---

---

Transmittal # 84-35  
Supervisor # 81-21

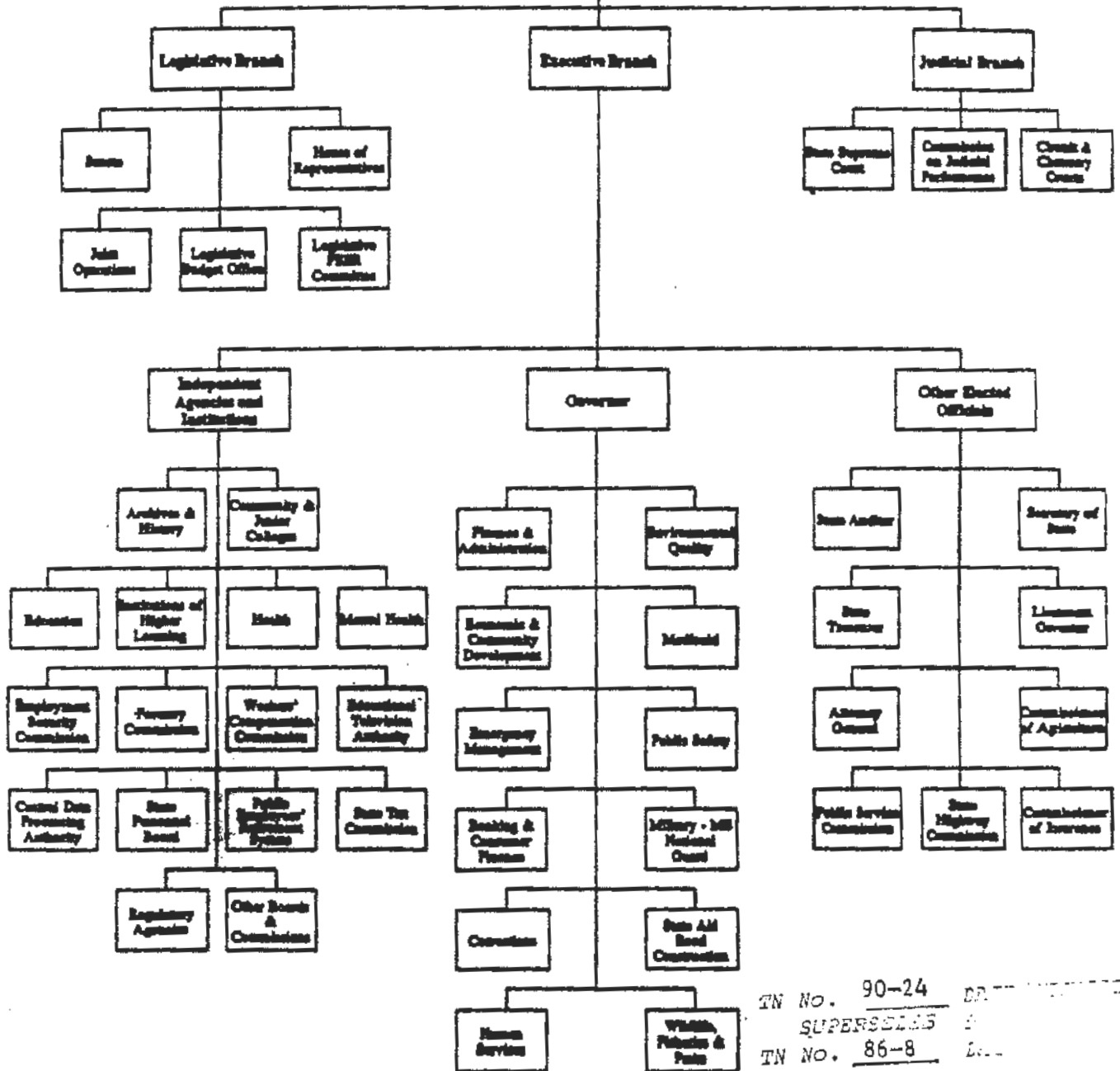
approved 12/31/85

Effective 10-1-84

Organization Chart

Effective July 1, 1989

Attachment 1.2-A  
Page 2



TN No. 90-24

SUPERSEDES

TN No. 86-8

DA [unclear]

[unclear]

[unclear]

12-2

10-

TN# 90-24  
Supersedes TH 86-8

STATE PLAN UNDER TITLE XIX OF THE SOCIAL SECURITY ACT

State Mississippi

ORGANIZATION AND FUNCTION OF SINGLE STATE AGENCY

---

Office of the Governor -- To assume many roles as an administrator, a molder of public opinion, the grantor of clemency, an important leader of his political party and an economist. To meet the different situations and changing conditions that take place, the Governor assumes one or more of these important roles - roles that directly touch the lives of all the citizens of the State. To meet crises immediately and the help citizens in disaster areas. To concern himself with a wide range of problems, and develop the Office of Governor into the general responsibility it now has. To assume many roles in the discharge of the office's important duties, to keep issues, programs and conditions in proper perspective. To establish priorities and create new programs to enhance the widening span of human endeavors. To maintain rapport and a good working relationship with the federal government.

Division of Medicaid -- See Attachment 1.2-B

No. 90-24 DATE/RECEIPT 12-24-90  
SUPERSEDES TN# 86-8 DATE/APPROVED 1-24-91  
TN No. 86-8 DATE/EFFECTIVE 10-1-90

---

Transmittal #90-24  
Supersedes TN# 86-08